

# 1080i Quick Installation Guide

## Before Starting

### About this Guide

This guide is intended for the LIP/IP Phone users and only provides installation about the 1080i. You can download the complete user guide here: [www.ericssonlg-enterprise.com](http://www.ericssonlg-enterprise.com).

### Unpacking the Phone

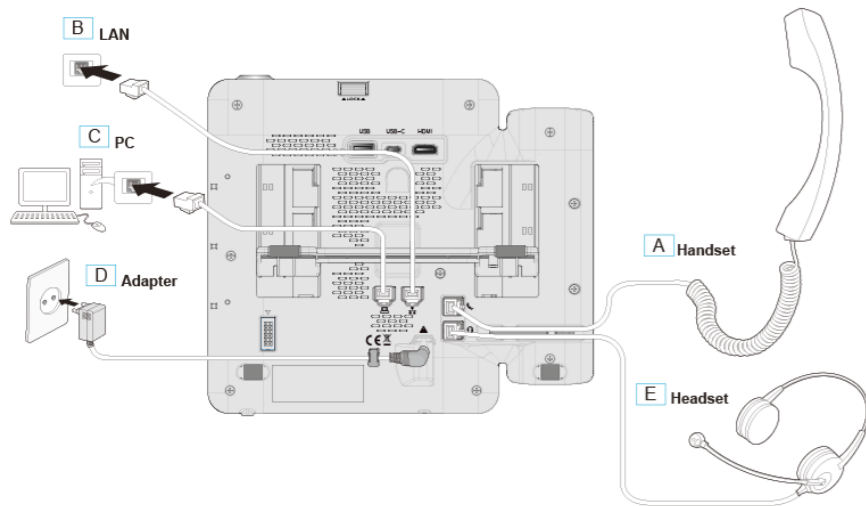
Carefully unpack your phone, be sure you have received each item in the following list:

- 1080i Phone, Stand, Handset and Handset cord, 1.5m CAT5E Ethernet cable

## Installation

### Preparation

Your phone should be placed on a level surface near an electrical outlet, such as a desk or tabletop.



The phone can be powered by either AC Adapter or Power over Ethernet. (PoE Class 4)

To use AC power, use only the Ericsson-LG Enterprise Approved AC power Adapter, which you can order separately. To use PoE, your connected LAN must support PoE.



**CAUTION:** Use either PoE or AC Adapter, not both, for the power supply of your phone

### Handset and Headset

- 1) Connect one end of the handset cord with the short straight section to the handset.
- 2) Connect the other end of the handset cord with the long straight section to the handset jack marked with the symbol.
- 3) Connect the headset cord to the headset jack marked with the symbol.

**NOTE:** Please read "Information about compatibility headset" before connecting the headset to ensure safe and proper use.

- 4) Thread all cords through the channel to prevent damaging the cord during use.
- 5) The 1080i supports USB Headset. If a USB Headset is plugged in, the Headset function operates as a USB Headset.

**NOTE:** If you plug in or unplug the USB headset during a call, it will operate from the next call. The USB and EHSA headset cannot be used together. Only one item must be connected.

### Information about Compatibility Headset

We cannot guarantee other headsets except the headset list posted on the web site. Regarding Headset compatibility, refer to "Headset list for IP phone" on the web site. We will update the compatibility list if we finish testing the new one anytime.

### Network and Power

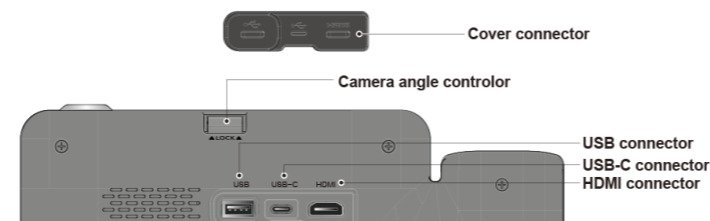
- 1) Plug one end of the supplied LAN cable into the LAN-Ethernet port on the back of your phone marked with the symbol.
- 2) Plug the other end of the cable into your LAN-Ethernet connection. (Do not extend the LAN Ethernet cable to the outside of the building.)
- 3) (Optional) If you connect your PC Ethernet through the phone, plug one end of the LAN Ethernet cable into the PC Ethernet port on the back of your phone marked with the symbol.
- 4) (Optional) Plug the other end of the cable into your LAN Ethernet connection of your PC.

**NOTE:** Skip the following procedures from 5) to 6) if PoE is used for your phone's power supply.

- 5) (Optional) Connect the AC power adaptor (not supplied) to the AC adaptor jack on the back of your phone. Fasten the cord with a hook to prevent it from being disconnected.
- 6) (Optional) Plug the AC power Adapter into the nearest AC power outlet. The phone will startup.

## Connecting a peripheral device & Camera Setting

Before you begin, remove the cover from the phone.



### USB

Connect USB devices to the port marked with "USB." You can use various USB devices, such as a keyboard, mouse, memory stick, and headset. Also you can do USB charging. If your phone does not detect your USB device while connected, we advise you to check if the USB cable is connected correctly.

### USB-C

Connect a USB type-C device to the port marked with "USB-C." This port can be used in DEBUG mode by a Certified Engineer. Also it can be used to USB type-C Headset connection. You cannot do USB charging.

### HDMI Cable

Connect an HDMI cable (not included) to the port marked with "HDMI." This HDMI port can be supported to connect your phone to your TV using an HDMI cable to stream anything you like from your phone to your HDTV.

### Camera Setting

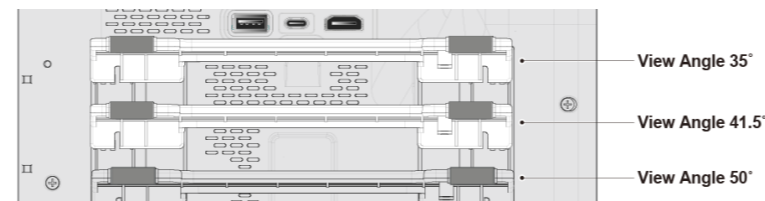
The front camera provides a rotation function(Camera angle controller) to adjust the camera view angle and lock the camera lens for security purposes.

## Stand Attaching & Wall Mounting

### Stand Attaching

The phone's angle is set by the attachment of the provided stand in one of two positions (35° or 41.5°, 50°). If you install the phone on a wall, do not attach the stand.

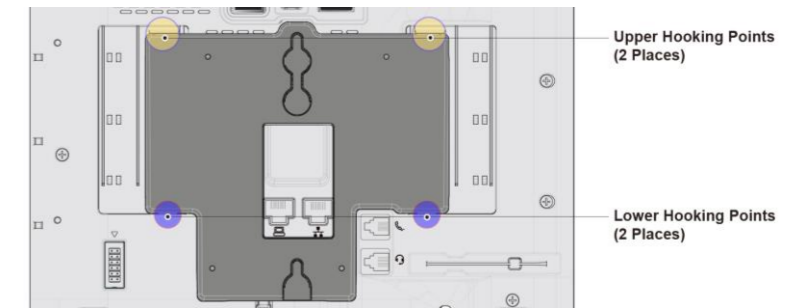
- 1) Choose the desired angle for the phone.
- 2) Align the tabs on the stand with the notches in the base of the phone.
- 3) Push the stand upward in the slot as far as it can go until properly attached.



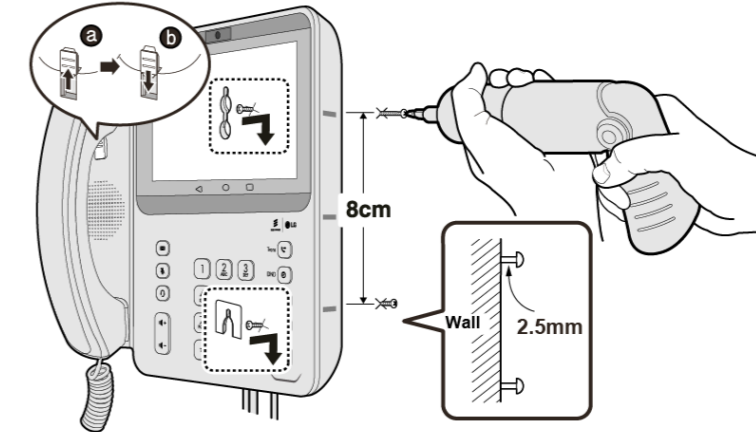
### Wall Mounting(Optional)

1080i phone can be wall-mounted as needed. The following instructions describe how to perform a wall mount installation.

- 1) Align the wall-mount bracket (not included) over the back of the phone as below picture
- 2) Fit the lower hooking points. (2 places) and then press the upper hooking points. (2 places)



- 3) Mark and drill two 7mm holes for plastic wall anchors (not included).
- 4) Insert the two anchors into the holes and insert and tighten the two screws (not included), leaving about 2.5 mm (1/8-inch) exposed.
- 5) Slide 1080i phone over the screws and assure the phone is secure.
- 6) Reverse the handset hook and re-install in the phone so that the hook catches the groove in the handset receiver.
- 7) Hang the handset up on the handset hook.
- 8) Complete all wiring.



This document's contents are subject to revision without notice due to continued progress in methodology design and manufacturing. Ericsson-LG Enterprise shall have no liability for any error or damage of any kind resulting from the use of this document.



Posted in Korea

<https://ericssonlg-enterprise.com/>

© Ericsson-LG Enterprise Co., Ltd. 2021

IPPCS is an Ericsson-LG Brand



## Regulatory Notes

---

### **[EU] European Union Declarations of Conformity**

Ericsson-LG Enterprise Co., Ltd. declare that the equipment specified in this document bearing the "CE" mark conforms to the Electromagnetic Compatibility Directive(EMCD,2014/30/EU) and Low Voltage Directive(LVD, 2014/35/EU).

Copies of these Declarations of Conformity (DoCs) can be obtained by contacting your local sales representative.

### **[USA/CSA] FCC/IC Interference Statement**

This equipment has been tested and found to comply with a Class B digital device's limits, according to part 15 of the FCC Rules.

These limits are designed to provide reasonable protection against harmful interference in a residential installation. This device complies with part 15 /RSS-GEN of the FCC/IC rules. Operation is subject to the following two conditions:

(1)This device may not cause harmful interference; and (2)This device must accept any interference received, including interference that may cause undesired operation.

(1)'appareil ne doit pas produire de brouillage, et (2)'utilisateur de l'appareil doit accepter tout brouillage radioélectrique subi, même si le brouillage est susceptible d'en compromettre le fonctionnement.

This equipment generates, uses, and can radiate radio frequency energy and, if not installed and used in accordance with the instructions, may cause harmful interference to radio communications. However, there is no guarantee that interference will not occur in a particular installation.

If this equipment does cause harmful interference to radio or television reception, which can be determined by turning the equipment off and on, the user is encouraged to try to correct the interference by one or more of the following measures:

- Reorient or relocate the receiving antenna.
- Increase the separation between the equipment and receiver.
- Connect the equipment into an outlet on a circuit different from that to which the receiver is connected.
- Consult the dealer or an experienced radio/TV technician for help.
- This Class B digital apparatus meets the requirements of the Canadian Interference-Causing Equipment Regulations, CAN ICES-3(B)/NMB-3(B)

Cet appareil numérique de la classe B respecte toutes les exigences du Règlement sur le matériel brouilleur du Canada.

CAUTION: Any changes or modifications in the construction of this device that are not expressly approved by the party responsible for compliance could void the user's authority to operate the equipment.

ATTENTION: Tout changement ou modification dans la construction de cet appareil qui ne sont pas expressément approuvé par la partie responsable de la conformité pourraient annuler l'autorité de l'utilisateur à utiliser l'équipement.This Class B digital apparatus complies with Canadian ICES-003.