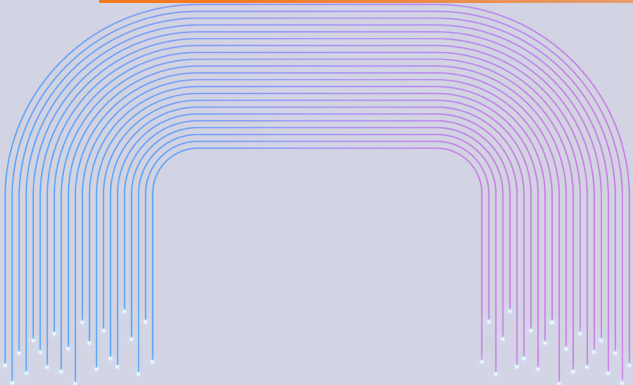


Evolve your business with  
**iPECS Communications solutions**

---





## iPECS Communications Solutions

iPECS is a global leader in providing innovative technology and business communications solutions. With decades of expertise, we empower business of all sizes to connect, collaborate, and thrive through innovative solutions.

iPECS Communications Solutions enables enterprises to boost revenue, reduce costs, enhance customer service, and increase productivity.

As a reliable business partner, iPECS offers customized solutions to small and large enterprises with a portfolio from Cloud UC, IP PBX, UC, Mobility, business applications and data solutions.



### Contents

- 03\_ Enterprise Business
- 06\_ Small and Home Office
- 08\_ Applications
- 13\_ Phones
- 19\_ iPECS Ethernet Switches

# ENTERPRISE BUSINESS

## iPECS Platforms

The value of any solution to an enterprise must be tied to the quantifiable results that can deliver to the organization. As an enterprise expands, these results become apparent as their workforce becomes mobile, global, and dependent on ease of communications and collaborations. For the business to perform and stay competitive, enterprises need tools that interoperate well together, bring fast, and well performed. With high quality interoperability, critical decision making can be faster and more efficient in the work environment.

To meet the enterprise needs, we offers the iPECS, converged IP enterprise communications solutions, that delivers a complete product lineup for unified communications including voice, data and applications for small to large enterprises. iPECS platforms, including call servers and gateways are at the heart of the iPECS solutions that have highly reliable hardware and software. Experience a fully distributed IP architecture and rich set of features.



# iPECS UCM

The next generation  
communications platform



## All-IP Enterprise Unified Communications Solution

iPECS UCM is an All-IP communications platform for medium and large enterprises. iPECS UCM provides IP telephony, various multimedia, applications, and mobility services over an IP environment. Its innovative design enables organizations to deliver the most reliable, flexible, and secured communications.

iPECS UCM employs a distributed architecture across an IP Network to communicate transparently without geographic limitations. Users at headquarters and branch offices have access to the same features and functions delivered by the central call server. This architecture enables you to deploy a flexible network and configuration to fit any business needs.

iPECS UCM redundant call server provides a strong survivability against LAN/WAN failure or main office call server failure with redundancy using Active-Standby or Active-Active configurations. iPECS UCM's geographic redundancy guarantees availability of communication even if the primary site fails.

iPECS UCM provides rich features beyond traditional telephone systems enriching customer's experience even further. In addition to fully featured internal business communications, iPECS UCM incorporates basic Auto Attendant/Voice mail, Least Cost Routing, Automatic Call Distribution, Web Management, VoIP Network Interface and customized Hotel solution.

System management is made easy with applications on iPECS UCM. iPECS WMS (Web Management System) for telephony system management, eNMS (Enterprise Network Monitoring) for real-time network monitoring, eVQM (Enterprise Voice Quality Management) for monitoring and troubleshooting the call quality, and eCSM (Enterprise Call Statistics Management) for analytics of the system operation statistics.

## Features and Benefits

### Maximized scalability

- Unlimited scalability by networking multiple servers
- Support Max 960,000 users with 8,192 local survival branches
- Call server options:  
S2K, S4K, 10K/30K/60K  
120K/240K/480K/960K
- Support Max 65,000 tenants
- iPECS UCP and iPECS eMG100 call servers can be used as a local call server

### Flexible network architecture with reliability

- Support flexible and simple network design on All-IP based modular architecture
- Local survivability with a range of local call servers
- Geographic redundancy for maximizing service availability
- Multiple redundancy options including Call Server/LAN/Control/Power unit

### Beyond investment protection

- Keep using iPECS UCP gateway module, iPECS eMG100, common applications and end points
- Support wide range of desktop phones from existing analog phones to high-end IP phones; Video, IP/SIP, digital analog phone, mobile phone client, etc.

- Communications cost reduction via internal VoIP calls and operational cost reduction by easy to use centralized management

An easy extension of the 3rd party services through standardized APIs as RESTful API, CSTA, TAPI and more

### Maximized Security on IP Comm.

- System access control using Access Control List
- Subscriber authentication
- IP Phone VPN and 802.1x
- Encryption between IP-PBX and IP Phone

# iPECS UCP

## Unified Communications Platform for UC&C and Mobility Solutions



### Simple, Flexible and Cost-Effective Platform

iPECS UCP is an unified communications platform designed to meet SME and enterprise communications needs. As ground breaking innovative platform, iPECS UCP provides out of box UC and Mobility solution. In addition, iPECS UCP is scalable for premium UC solution. There are 3 models for your business size.(UCP100, UCP600, UCP2400)

As the most compelling advantage, unified communications services are embedded in iPECS UCP. Users can improve business efficiency and productivity with embedded UC features including real-time voice, video and presence enabled IM with messaging services(Visual Voice Mail and SMS etc.) under a single user interface on multiple devices without the need of an external server. Also, it is seamlessly expandable to provide advanced collaboration services(File sending, application sharing and multi-party video conference etc.) by simply adding an external server.

iPECS UCP provides multiple mobility solutions to improve business productivity and decrease communication expenses. iPECS IP DECT solution provide feature rich and reliable communications for internal mobile workers. iPECS UCS mobile client delivers power of a desk phones to smartphones or tablet PCs for external mobile workers.

iPECS UCP provides a various range of applications and mobile clients to fulfill varing needs and requirements in the SME environments. Also, it offers interoperability with various 3rd party solutions in hospitality healthcare and other verical industries.

### Features and Benefits

#### Embedded UC and telephony

- iPECS UCS standard server is built in iPECS UCP
- iPECS UCS standard provides numerous features such as Video, Instant Message(IM), Audio Conference, Visual Voice Mail (VVM) etc.
- iPECS UCS premium server (External server) provides more advanced features than standard server

#### Seamless scalability

- Expansion of system capacity is available by a simple license up to Max 2,400 ports
- User can reduce initial and upfront investment cost
- Ability to expand with licenses as the business grows

#### Mobular All-IP architecture for ultimate flexibility

- Geographical call server redundancy and power redundancy
- T-NET(Transparent Networking) for local survivability and PSTN failover
- IT managers can easily manage a multi-site business network
- Realizing a seamless and powerful business communication

#### Improved business performance

- Diverse applications for user (iPECS IPCR, Attendant, CCX, Voice Mail, ClickCall)
- Interoperability with various 3rd party solutions in hospitality, healthcare and other vertical industries with Web API supported
- Interworking with MS Teams through Call2Teams middleware

#### Virtualizing business communications

- Software based call server (vUCP) runs on VMware, AWS or MS Azure
- Same software as on-premise iPECS UCP and all the system features as well
- Easy deployment with scalability and flexibility with iPECS vUCP starting from 50 and up to 2,400 ports

# SMALL AND HOME OFFICE

## Smart and Efficient Solutions

New technologies in the realm of telephony bring communications advances that influence changes in business. Traditional imperatives in the SOHO telephony market are cost-effectiveness and ease of operation and maintenance; the latest generation technologies provide both without requiring significant technical training and support.

iPECS provides communications solutions that fit the needs of small businesses to help accelerate business opportunities. And it will provide a better customer satisfaction with sophisticated service options - while, giving them full-control to manage the system for themselves. In the end, no matter what size your business is, iPECS delivers business critical solutions that give you a competitive advantage.



# iPECS eMG100

## Best-in-class Hybrid Communications Solution

It's time for unified communications (UC), the transformative tool that integrates all your business communications into one place. Here's the cost competitive and simple platform for small and midsize businesses to help connect better, boost efficiency, and move your business to the next level.

It's a cost effective hybrid platform that supports IP, digital, analog, and UC devices, so you can work from any device with any technology. When looking for a communication system and value for money comes as the main decision-making factor. iPECS eMG100 provides many built-in solutions that will maximize your return on investment. TDM interfaces, built-in VoIP and VM capacity with emergency alarm and relay and paging features are all embedded as default. Compact design, single cabinet with many of the communication features included out of the box. Enjoy your best-in-class hybrid communication system with iPECS eMG100.



## Features and Benefits

### Simple single cabinet

With a single cabinet solution it removes the hassle of carrying multiple cabinet types for your communications solution. iPECS eMG100 comes as a single cabinet that can be wall mounted or 19-inch rack mount depending on your requirements. All ports are equipped with a RJ45 interface to have universal compatibility. Whether you are looking for series of capacity upgrades, complete hardware expansion or technology upgrade from TDM to IP, this single cabinet simplifies your solution options. Add an additional license to connect another iPECS eMG100 cabinet to simply double your communication power.

### Reliable multi-site deployment

We provide multi-site deployment with a local/branch system that supports local survivability (LCM). Centrally connected and managed, your communication system is secure and reliable. In case of a network failure, local servers will take over the operation to securely manage the local communication system. Backup connections to the local PSTN network can also be used as a last resort. Avoid downtime with automatic fail-over between sites, so that your clients can reach you whenever they need.

### Easy installation and simple management

The user-friendly interface is consistent across devices, keeping training times quick. Simple software installation makes the initial settings effortless. Multiple levels of user-friendly administration tools also add value for easy management. Web-admin helps IT managers to easily customize their workflows and manage the real-time operation locally and remotely. The 'Web User Portal' allows end-users to easily personalize their communication needs from anywhere and anytime on any device such as their desktop, smart phone or tablet.

- Best-in-class hybrid for analog, digital and IP technologies
- Single cabinet for basic and expansion KSU
- Equipped with all RJ45 interfaces
- Max 214 ports - 74 trunks/140 EXT.
- Wall or 19 inch rack mounting

### Out of the box Unified Communications

As the most compelling advantage, advanced business communication features are provided by default. Users can improve business efficiency and productivity with embedded UC features including real-time voice, video and presence enabled instant messaging under a single user interface on any device.

### Rich business applications

iPECS eMG100 provides a various range of business applications and mobile clients to fulfill varying needs and requirements in the small and medium sized enterprise environments. It also offers interoperability with various 3rd party solutions in hospitality, healthcare and other vertical industries.

### Tailor to your needs

All businesses are different. Whatever makes you distinctive, pick the applications and integrations you need to connect better and deliver more. Choose from the many add-ons to meet your specifications from our suite of products or from compatible 3rd party solutions with easy integration. iPECS eMG100 provides a cost-effective way to use existing solutions by using universal interfaces such as Web API to provide compatibility.

# APPLICATIONS

## Empowering Business Communications and Collaboration

To enrich the business communications experience and empower collaboration, applications are critical in addition to IP telephony platforms. iPECS provides a variety of software applications for business communications and collaboration.

Lead the way in communications with a full suite of cutting-edge apps for all business sizes. From Unified Communications (UC) platforms to specialized tools to boost productivity, find all you need to connect your team and your customers.





# iPECS UCS

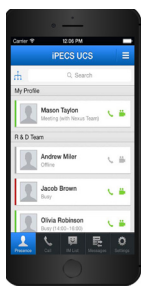
## Unified Communications Solution for Enhancing SMBs

iPECS UCS is a powerful multimedia collaboration and productivity enhancing application which is exclusively designed for small and medium sized businesses. Users can experience powerful UC solution without concerns over expenses thanks to a single server architecture. The rich features, capability and the ability to integrate 3rd party solutions are well-suited for small and medium sized customer's UC environment.

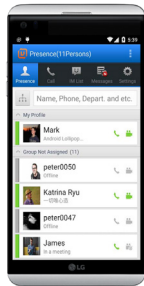
*\* iPECS UCS feature set will be dependent on the types of license installed.  
(Please refer to UCS datasheet for detailed license information.)*



[ Desktop client ]



[ iOS ]



[ Android ]

### Integrated Presence

- Instant decision on reachability by status color
- Save time and cost through real-time communications with people who are available for collaboration
- Integrated DND setting is available for both iPECS UCS client and desktop phone at the same time

### Instant Messaging, SMS and Note

- Various chatting mode(1:1, 1:N, Ad-hoc)
- Inviting others by drag and drop
- Packet encryption by AES
- Send and receive text message to other internal iPECS system or external SMS users
- Leave a note for offline iPECS UCS user

### Audio Call & Conference

#### <Audio Call>

- Call popup : Display caller's information based on CID
- MS Outlook popup : Display caller's contact information in MS Outlook based on CID
- Call memo : Noting important information during a call

#### <Audio Conference>

- Easy conference building by graphical user interface and drag and drop
- Conference control features : Invite, Remove, Mute, Changing Master, Record

### Video Call & Conference

- Build face to face conference at anytime, anywhere
- Maximum 9 party, 8 group video conference
- Video resolution : QCIF, CIF, VGA, 4CIF (704 x 480/576)
- Ad-hoc conference
- Meet-me conference and e-mail notification
- Application sharing during conference
- Remote monitoring, still shot
- Presentation mode (1:32)

### Collaboration

- More effective and productive work with others
- File Send
- Program sharing
  - Application : Sharing documents, spreadsheets, presentations and drawing in real time
  - Desktop : Sharing desktop screen
- Web push : Sharing web page address
- Whiteboard : Sharing drawings and free-form text

# Contact Center Solution

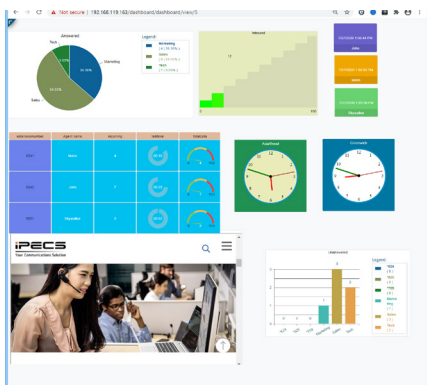
## Intelligent Multi-Channel IP Contact Center Solution



[ iPECS CCX Web Dashboard ]



[ iPECS CCX Web Desk agent ]



[ Real-time Statistics and ACD Dashboard ]

iPECS offers a contact center solution that covers all size business. iPECS CCX is a web based professional multi-channel IP contact center solution best integrated with iPECS platforms. Including desk client and reporting tool as default, iPECS CCX provides many additional modular applications.

### iPECS CCX

iPECS CCX is a web based multi-channel contact center solutions package for all businesses. Its multiple channels in comprehensive all-in-one solution provide seamless connections for your smart customer services.

#### Best suite for small and medium sized contact center

- Cost effective bundles for basic contact center with iPECS platforms
- Flexible add-on and optional modules for additional functionality

#### Multi-channel all in one solution

- iPECS CCX enables you to provide smart customer service enabling customers to communicate any way they choose
- Managing telephone, e-mails, voice mail, fax, SMS, web call back, call back in queue, web chat and social networking

#### Web based reporting tool

- Real-time monitoring and historical reports on a range of call accounting, billing, call analysis, etc.
- Integrating with voice recording or CRM/Database in the contact center to show comprehensive reports
- Business intelligent web based Dash Board

### iPECS CCX Report Plus

iPECS CCX Report Plus business reporting module delivers historic and current information on business communications, supporting better analysis and decision making.

#### Service and performance monitoring

- Real-time information display about every call including agent status and action
- Intuitive tool to monitor customer service and the operational performance of your business
- Proprietary protocol between the call server and reporting server instead of TAPI
- Agent Control by supervisor in Agent Web Client
- Accesses anywhere - use dashboard in the company or remote office
- Automatic scheduling of reports to print, e-mail or file(PDF, Excel)
- Call recording integrated with report in one conference

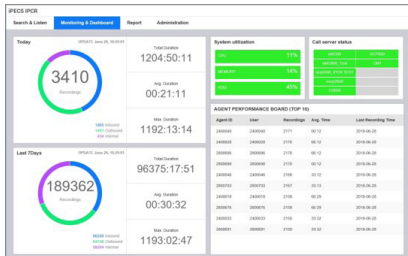
#### Business intelligence dashboard

- Business intelligence dashboard, real-time dashboard screen and threshold alerting service
- Simple for user to configure and create multiple dashboard screens
- Web based agent and dashboard
- Wallboard and alert management

# iPECS IPCR

## IP Call Recording Solution

iPECS IPCR(IP Call Recording) is a call recording and monitoring solution tightly integrated with iPECS platforms optimized for small and medium sized offices and contact centers. iPECS IPCR is designed as a simple and cost- effective solution, while it delivers powerful value added features. iPECS IPCR can meet the needs of robust call recording to ensure regulatory compliance and quality management.



[ iPECS IPCR Dashboard ]

### Real-time monitoring and recording single server for all terminals

- Automatic call recording and on-demand recording
- No additional hardware or cabling required
- IP, digital and SLT extension recording
- On-demand recording of the entire call, simply press call recording button any time during the call
- Voice packet encryption and call recording at the same time

### Remote call recording

- Record calls to remote branch, home office and road warriors
- Conversations are saved in a central or remote servers

### Search and play recording

- Web based search and play
- Built in media player : Play, stop, pause, marking and speed control

### Distributed recording

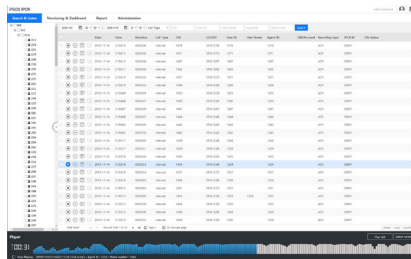
- Traffic balancing and employing through local iPECS IPCR servers
- Support server redundancy for local survivability

### Conference recording

- From 3 up to 32 party conference recording
- Mixing multi party conversation paths into one path via MCIM

### Ready for virtualization

- iPECS IPCR can be deployed on AWS environment with max 50 concurrent recording channels



[ iPECS IPCR User Interface ]

# iPECS ClickCall

## Significant Change in Your Office Communications

iPECS ClickCall is a smart application used to make communications simpler and easier when working with a PC. All you need to do is drag a telephone number from any Windows application such as a website, Windows document or any application running on your PC. You don't need to memorize a phone number to make a call from a desktop phone. You can even reduce the chances of delays or mistakes made by pressing buttons when making a call in desktop phone.



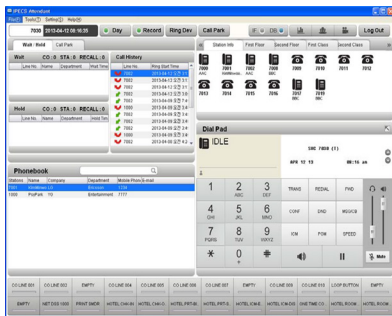
[ iPECS ClickCall ]

- Click to call from any selectable number in Windows application
  - Easy dialing of selectable number from Windows applications
  - Show dialed call log up to 10
  - Exit/Setup only through the icon in Windows tray
  - Setup dialing information
  - Multi language support
- Call control client without voice module
- Easy installation : Simple call client without dedicated server

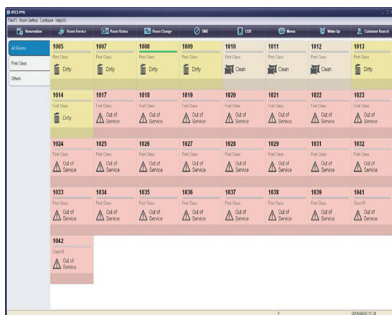
# Software Attendant Console

## Operator and Information Solutions

iPECS provides PC based software attendant consoles that integrate telephony with external call data and workforce information. The applications simplify call handling and meet evolving communications requirements. As the operator consoles for iPECS's communications systems, iPECS Attendant gives highly efficient telephony connections for attendants, receptionists and secretaries.



[ iPECS Attendant Office Version ]



[ iPECS Attendant Hotel Version ]

### iPECS Attendant

iPECS Attendant is the IP based attendant console with soft phone function, hotel features and an improved user interface. Based on the iPECS platforms that integrated with iPECS Attendant, the supported features are various for quick and easy call handling.

#### Embedded IP soft phone functions

- Various call features without an external desktop phone
- High quality voice communications using a PC or laptop

#### Desktop call control mode (Supported over Ver. 2.6)

- Additional option for an attendant using desktop IP phone for voice
- Supports Same call features as in iPECS Attendant softphone mode

#### Easy to use interface

- Wait time and priority based call handling with caller information
- Quick and easy call handling with simple click or drag and drop
- Desktop phone and status presence based call routing
- iPECS UCS presence information display
- Busy Lamp Field (BLF) and status information display
- Shortcut keys for frequently used functions
- Pre-selected and customized station status message setting
- Station setting modification: Station name, COS, Temporary COS, attendant cancel, music selection
- Attendant status change : Day, Night, On demand, Weekend, Auto ring, Forward

#### Simple directory and database management

- Local phone book import and export
- Database and system component back up to the local hard disk drive
- Multiple local database interface
- Support MS Outlook integration
- Phone book management : Register, Edit, Delete, 17 database fields, Dynamic search, Sort, Filter

#### More productivity enhancement features

- Dialing options : Keypad dialing, click to call from the phone book, station icon, log view and speed dial
- Video call, Conferencing, Call recording, Text messaging, E-mail notice, Paging, Emergency call monitoring, etc.
- Multiple attendants' monitoring and superb statistical reporting of all calls

#### Hospitality features

- Check in/out, wake up call, room status, room cut off, hotel reservation part-time of room charge calculation, add additional service charge option etc.
- Wake-up call management: Multiple wake-up, group set, optional set
- iPECS Attendant Hotel for basic PMS functionality
  - Check-out billing service, Custom billing format
  - System Information update in real-time(PMS DB sync)
  - DND service, message service
  - Room class(COS) setting, Room change and automatic change of COS when check out

# PHONES

## Business Communications Phones

To an end user, the telephone that sits on the desk is the system. It is the critical interface that determines how easy it is to use the system, and in turn, how productive, effective and satisfied they can be. That's why iPECS offers a wide range of user friendly business portfolio to fit any business.

iPECS IP phones support a comprehensive suite of telephony features and applications with solutions designed to meet varying communications needs from small to large environments.



# IP Phones

## iPECS 1000i series

Intuitive user interface, superior HD voice, comprehensive range of terminals meet the needs of your entire organization for today and future. Enjoy the wide selection of iPECS 1000i IP phones from entry level to professional business phones.

Simple installation and maintenance are designed into the phones. Managers and administrators can access the system via the web admin from any remote location. The intuitive user interface helps manage sophisticated feature configuration and easy maintenance routines.

## 1080i Premium

### Premium Gigabit video IP Phone

- 7" (1024 x 600) touch & color display
- Up to 48 programmable keys with 12 self-label keys
- HD video with high resolution (HD720p) and 8M pixel camera
- HD audio for handset and speaker with wideband codec (G.722, Opus)
- Full duplex speakerphone with wideband voice
- Dual Gigabit Ethernet ports
- 2 USB ports for charging and USB accessories
- Built-in Wi-Fi, Built-in Bluetooth and HDMI port
- OS version: Android 10



## 1050i Advanced

### Advanced Gigabit color IP Phone

- 8 line 4.3" (480 x 272) color display
- Up to 36 programmable keys with 12 self-label keys
- HD audio for handset and speaker with wideband codec (G.722, Opus)
- Full duplex speakerphone with wideband voice
- Dual Gigabit Ethernet ports
- 1 USB port for charging mobile devices and USB accessories



## 1040i Professional

### Professional Gigabit color IP Phone

- 6 line 3.5" (480 x 320) color display
- Up to 24 programmable keys with 8 self-label keys
- HD audio for handset and speaker with wideband codec (G.722, Opus)
- Full duplex speakerphone with wideband voice
- Dual Gigabit Ethernet ports
- 1 USB port for charging mobile devices and USB accessories



## 1030i Essential

### Essential Gigabit color IP Phone

- 6 line 2.8" (320 x 240) color display
- Up to 18 programmable keys with 6 self-label keys
- HD audio for handset and speaker with wideband codec (G.722, Opus)
- Full duplex speakerphone with wideband voice
- Dual Gigabit Ethernet ports





## 1020i Basic

### Basic Gigabit IP Phone

- 4 line 2.8" (132 x 64) grayscale display
- Up to 16 programmable keys with 4 self-label(x3 pages) and 4 paper-label keys
- HD audio for handset and speaker with wideband codec (G.722, Opus)
- Full duplex speakerphone with wideband voice
- Dual Gigabit Ethernet ports



## 1010i Entry

### Cost effective entry IP Phone

- 4 line 2.4" (132 x 64) BW display
- 4 self-label programmable keys
- HD audio for handset and speaker with wideband codec (G.722, Opus)
- Full duplex speakerphone with wideband voice

## Expanding the scalability and responsiveness



### 1048ilss

- 48 buttons DSS
- LCD underlay (4.3" color LCD)
- Compatible with 1020i, 1030i, 1040i, 1050i, 1080i



### 1048idss

- 48 buttons DSS
- Paper type underlay
- Compatible with 1020i, 1030i, 1040i, 1050i, 1080i



### 1024idss

- 24 buttons DSS
- Paper type underlay
- Compatible with 1020i, 1030i, 1040i, 1050i, 1080i

## EHSA (Electronic Hook Switch Adapter)

### Enable remote control for well-known EHS Headsets

- Compatible with 1020i, 1030i, 1040i, 1050i
- Wired and wireless EHS devices support
- Stable and better quality operation



# IP DECT

## Business IP DECT Solution

iPECS provides a new and cost effective business IP DECT solution with advanced features for both enterprises and small to medium-sized businesses. Make your Enterprise IP wireless with iPECS IP DECT solution.



### 150dh

- Feature rich 2 inch TFT color LCD
- 50 call log
- 250 local phonebook
- Dedicated emergency button
- Man-down support
- Pull cord support
- Ruggedized design with IP65 compliant
- Bluetooth pairable
- HD audio speaker phone
- Vibrator
- Headset jack(3.5mm)
- 16 languages
- Standby 200hrs/Talking 17hrs



### GDC-800H

- Feature rich 2 inch TFT color LCD
- 50 call log
- 100 local phonebook
- Emergency button (ok button)
- HD audio speaker phone
- Vibrator
- Headset jack(3.5mm)
- 16 languages
- Standby 200hrs/Talking 18hrs



### 120dh

- Feature rich 2 inch TFT color LCD
- 50 call log
- 100 local phonebook
- HD audio speaker phone
- 16 languages
- Standby 350hrs/Talking 22hrs



### 130db

- Multi-cell IP-DECT base
- Max 254 base stations in a zone
- Up to 1,000 handset registrable
- 8/9 simultaneous calls per base (Multi-cell case/Single cell case)
- Narrow or Wide Band Audio
- Multi-Authentication
- Software Upgrade Over The Air (SUOTA)
- Air sync and LAN sync
- SIP Protocol
- IP security TLS 1.2, sRTP
- Statistics (Call data, System data, DECT data)
- Central directory



### 110db

- Cost effective single cell IP-DECT base for small offices
- 1 repeater for coverage expansion
- Up to 20 users can be registered
- 5 simultaneous calls
- Narrow or Wide Band Audio
- Central directory
- SIP Protocol
- IP security TLS 1.1, sRTP
- Statistics (Call data, System data, DECT data)



### 100dr

- DECT repeater for coverage expansion
- Compatible with 110db/130db
- Range (Open / Building) : up to 300m / 50m

*\* Max coverage is dependent on environments.*



# Digital Phones

LDP-9200 series are iPECS digital desktop phones that bring the functionality to the desktop with display based interfaces, call log, self labeling keys, and simplified administration. Also, iPECS digital desktop phones meet the diverse requirements for features, reliability, ease of use, and productivity as well as ergonomic user friendly design.



## LDP-9240D

---

- 8 line graphic LCD with backlit(320x144)
- 24(12x2pages) programmable feature keys with Dual LED
- Wide Band Speaker phone
- Support button kit and EHSA



## LDP-9224DF

---

- 3 line graphic LCD with backlit(192x36)
- 24 programmable feature keys with Dual LED
- Wide Band Speaker phone
- Support button kit and EHSA



## LDP-9224D

---

- 3 line 24 character LCD
- 24 programmable feature keys with Dual LED
- Narrow Band Speaker phone
- Support button kit and EHSA



## LDP-9208D

---

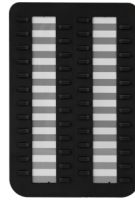
- 2 line 24 character LCD
- 8 programmable feature keys with Dual LED
- Narrow Band Speaker phone
- No support button kit and EHSA



LIP-9012DSS



LIP-9024DSS



LDP-9248DSS



**EHSA**  
(Electronic Hook Switch Adaptor)

	LIP-9012DSS	LIP-9024DSS	LDP-9248DSS	EHSA
DSS keys	12(3 color LED)	24(3 color LED)	48(3 color LED)	Support LDP-9224D/24DF/40D
Underlay	Paper	Paper	Paper	Detail Wired and wireless EHS devices support
Support	LDP-9224D/DF/40D	LDP-9224D/DF/40D	LDP-9224D/24DF/40D	
DSS connection	1	1	Up to 2	

## Analog Phones

### Single Line Telephones

The LKA series contains a set of user friendly features and secure connection to iPECS communication platforms.



LKA-220C

- 16 digits, 3 line LCD
- OHD(On Hook Dial)
- Ring lamp/Direct memory(3)



LKA-210

- 16 digits, 3 line LCD
- Speaker phone
- Ring lamp/Direct memory(3)



LKA-200

- Simple SLT
- 3 memory buttons
- Redial/Volume control

# ETHERNET SWITCHES

## Simpler and Smarter Networking for the SME

Today, SMEs are facing more and more challenges with the growing complexity of IT solutions from its limited budgets and resources, however, they have to operate in the same business environment competing against larger enterprises. With the vision to deliver an optimized solution to best solve these challenges, iPECS Ethernet Switch families are designed to be simpler to install and smarter to manage with high reliability. iPECS Ethernet Switch can perfectly solve the needs from the varying environments and challenges with less effort and lower investment now and in the future.

### iPECS ES-3500 Series L2 Managed Switches



#### ES-3528GP

- 24 ports 10/100 Base-TX
- 4 ports Gigabit shared uplinks
- RJ-45 Console port support
- High availability
- IPv4/IPv6 dual protocol stack



#### ES-3552P

- 48 ports 10/100 Base-TX
- 4 ports Gigabit shared uplinks
- RJ-45 Console port support
- High availability
- IPv4/IPv6 dual protocol stack

### Easy to install

iPECS Ethernet Switches have plug and play capabilities such as Auto-negotiation of speed and duplex mode, Auto-MDI/MDIX, at a glance intuitive status LEDs right on top of the ports. And also its intuitive web user interface makes the installation and administration much easier.

### Advanced QoS(Quality of Service)

Prioritization of the data on the network is essential in order to ensure that mission critical applications such as voice are delivered in a timely manner. iPECS Ethernet Switches are able to classify packets into different priority queues and deliver each packet in the priority queues using WRR(Weighted Round Robin) or SPQ(Strict Priority Queuing) method.

### Virtual Private Network

iPECS Ethernet Switches supports Layer2 VPNs by using Q-in-Q functions, where an 802.1Q tag from a customer VLAN is encapsulated in a second 802.1Q tag. The switch supports rewriting the VLAN tag of egress traffic when the ingress traffic is tagged.

### Green ethernet

iPECS Ethernet Switches incorporate the latest green ethernet technology to help you save energy costs. iPECS Ethernet Switches use either EEE(Energy Efficient Ethernet) or are able to detect link status and cable length allowing each port to dynamically configure providing maximum power efficiency.(Gigabit models only)\*

### Secure networking

iPECS Ethernet Switches support key security features like RADIUS authentication and authorization as well as multi-layer filtering. Web management sessions can be secured with HTTPS encryption.

### IPv6 Support

iPECS Ethernet Switches support a number of IPv6 features, including IPv6 Management, DHCPv6 Snooping with Option37, IPv6 Source Guide, and MVR6.

The content of this document is subject to revision without notice due to continued progress in methodology, design and manufacturing. IPECS shall have no liability for any error or damage of any kind resulting from the use of this document.

© IPECS Co., Ltd. 2025. Ver 11.0

IPECS Co., Ltd.  
(8503) 189, Gasan digital 1-ro,  
Geumcheon-gu, Seoul, South Korea  
Telephone: +82-2-3777-1114  
Fax: +82-2-480-7240  
[www.iPECS.com](http://www.iPECS.com)

**iPECS**  
Part of Ericsson